



COOK BEYOND

WHOLESALE PRODUCT PRICE LIST

Made in Hong Kong | [www.cookbeyond.co](http://www.cookbeyond.co)  
全部熟成工序均在新蒲崗3000呎中央廚房制成

Item Code # 編號	Product Name 產品名稱	Weight Per Pack 每份重量	B2B Price(Per Pack) 批價(每份)	Category 品類
WSAH0001	Tomatoes Base 蕃茄醬	1kg	\$42.00	Hot Sauce
WSAH0004	Homemade BBQ Sauce 燒烤味醬	1kg	\$88.00	Hot Sauce
WSAH0005	Italian Beef Bolognese 意式蕃茄牛肉醬	1kg	\$72.00	Hot Sauce
WSAC0007A	Caesar Dressing 凱撒沙律醬	500g	\$48.00	Cold Sauce
WSAC0007B	Caesar Dressing 凱撒沙律醬 (500gx2)	1kg	\$92.00	Cold Sauce
WSAC0008A	Homemade Guacamole 牛油果醬	500g	\$98.00	Cold Sauce
WSAC0008B	Homemade Guacamole 牛油果醬 (500gx2)	1kg	\$190.00	Cold Sauce
WSAC0011A	Homemade Italian Pesto 意式青醬	500g	\$148.00	Cold Sauce
WSAC0011B	Homemade Italian Pesto 意式青醬 (500gx2)	1kg	\$288.00	Cold Sauce
WSP0001	Wild Mushroom Soup 野菌湯	2kg	\$78.00	Soup
WSP0002	Butternut Squash Coconut Soup 椰香南瓜湯	2kg	\$68.00	Soup
WSP0003	Tomatoes & Basil Soup 蕃茄香草濃湯	2kg	\$68.00	Soup
WSP0006	Beef Stock 牛肉高湯	2kg	\$139.00	Soup



COOK BEYOND

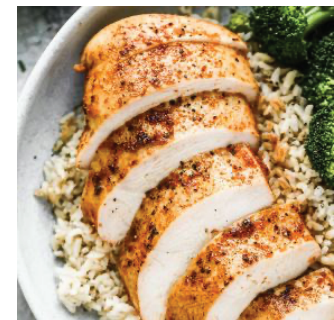
WHOLESALE PRODUCT PRICE LIST

Made in Hong Kong | [www.cookbeyond.co](http://www.cookbeyond.co)  
全部熟成工序均在新蒲崗3000呎中央廚房制成

Item Code # 編號	Product Name 產品名稱	Weight Per Pack 每份重量	B2B Price(Per Pack) 批價(每份)	Category 品類
WMC0003A	U.S. Cooked Chicken Breast 慢煮雞胸(熟)	220g	\$31.00	Chicken
WMC0003B	U.S. Cooked Chicken Breast 慢煮雞胸(熟)(220gx5)	220g	\$150.00	Chicken
WMP0002	Sliced Bacon (Breakfast) 早餐煙肉片	1kg	\$88.00	Pork
WMP0003	BBQ Pulled Pork BBQ 手撕豬肉(熟)	1kg	\$78.00	Pork
WMP0004	Rubbed Sugar Pork Ribs 燒烤醬豬肋骨(熟)	(C.W. 抄碼/kg)	\$155.00	Pork
WMP0005A	Smoked Pancetta 意式煙肉粒	1kg	\$98.00	Pork
WMP0005B	Smoked Pancetta(whole, skin on) 意式煙肉(原塊有皮)	(C.W. 抄碼/kg) 2.5-3.5kg/pc	\$78.00	Pork
WMP0009	Cooked Saus-vide German Pork Knuckle 慢煮咸豬手臂(熟)	(C.W. 抄碼/kg)	\$62.00	Pork
WB0004	Buttered Herbs Crouton 牛油香草烤麵包粒	1lbs	\$48.00	Bread
WVM0001	Cooked Mix Wild Mushroom 熟雜菌	1kg	\$68.00	Mushroom



Photo Ref.  
圖片參考





**COOK BEYOND**  
WHOLESALE PRODUCT PRICE LIST

# ORDER NOW!

Sales Order Hotline : (852) 9682 0308  
訂單熱線

Email : [order@beyondcompare.hk](mailto:order@beyondcompare.hk)  
電郵

## CONTACT INFORMATION 聯絡資料

Office Hour | MON - FRI 星期一至星期五  
辦公時間 | 9:30am - 6:30pm

## DELIVERY INFORMATION 送貨須知

Order Cut Off Time | MON - SAT 星期一至星期六  
截單時間 | 4:00pm  
Except public holiday (公眾假期除外)

Delivery Schedule | H.K.Island 港島  
送貨安排 | MON/WED/FRI 星期一/三/五  
KLN 九龍/NT 新界  
TUE/THU/SAT 星期二/四/六

At least one working day before delivery at 4:00pm

送貨前1個工作天下午4時正前下單

For the order below HK\$800 , HK\$150 delivery fee will be charged.

訂購金額少於HK\$800, 須收取HK\$150 運輸費

No delivery service for Islands District

送貨不包括離島區